

# The Great WWT

Your challenge:  
**FIND ALL  
12 INSECTS**  
and tick them off this list!

# GARDEN Bug Hunt

## Spotter Sheet

Your garden and neighbourhood is home to **extraordinary insect life.**



Peacock Butterfly

© WWT

### 1. Butterfly

**Main features:** Large patterned, colourful wings, folded vertically above body when at rest. Antennae ('feelers') with clubbed ends.

**Where to look:** Flitting around anywhere on warm sunny days, especially near flowers.



Water boatman

© Kentish Plumber @ flickr

### 7. Water boatman

**Main features:** Oval shaped bugs in water. Long legs act as paddles to swim upside down, often just under the water surface.

**Where to look:** In ponds or larger areas of calm water. Often found when pond dipping.



Bumblebee

© Mark Kent @ flickr

### 2. Bee / Wasp

**Main features:** Buzzy insects with striped, hairy bodies. Quite small transparent wings. Can sting when unhappy!

**Where to look:** Anywhere, especially around flowers. Wasps can be attracted to sweet stuff (like your ice cream).



Common hoverfly

© Kinright @ flickr

### 8. Hoverfly

**Main features:** Fly-like with transparent wings. Variable colours and shapes. Many mimic bees or wasps but all are harmless and don't sting.

**Where to look:** Like to feed on plants like cow parsley. Hovering and darting flight, more purposeful than bees or wasps.



Ladybird

© rjp @ flickr

### 3. Ladybird

**Main features:** Small, round insects with short legs and variable colours of spotted 'shell'. Can fly, after pulling back the wing covers.

**Where to look:** Often found crawling around on plants, especially ones where aphids live - their favourite food.



Daddy long legs / Crane fly

© Phil Melver @ flickr

### 9. Crane fly

**Main features:** Very leggy flies with two transparent wings which are much shorter than the legs. Males have pointed body ends and those of a female are blunt.

**Where to look:** Clinging to vertical surfaces like trees or buildings. Although common, they're sometimes hard to see.



Migrant hawker dragonfly

© WWT

### 4. Dragonfly

**Main features:** Large insects, big eyes, long brightly coloured body and four large, transparent wings. At rest, the wings are held out as if still flying.

**Where to look:** Strong fliers, often seen patrolling their patch around wetlands, or perching and then dashing out to catch their prey.



Common grasshopper

© Mark Kempe @ flickr

### 10. Grasshopper / Cricket

**Main features:** Stout with big back legs for jumping. Long antennae. Males of most species 'sing' or chirp, so you might hear one first.

**Where to look:** Listen out in grassy areas. Often well camouflaged. When disturbed, they'll jump!



Common blue damselfly

© WWT

### 5. Damselfly

**Main features:** Long, slender bodies with eyes set wide apart. Four transparent wings, folded along top of body at rest. Often brightly coloured.

**Where to look:** Seen delicately flying around wetlands and perching on plants near water. Weaker fliers than dragonflies.



Violet ground beetle

© Kentish Plumber @ flickr

### 11. Beetle

**Main features:** Beetles have tough front wings (elytra), which form part of their backs' armoured, shell-like covering. Their wings are tucked underneath.

**Where to look:** They're the commonest insect in the world and are found everywhere in lots of different shapes and sizes.



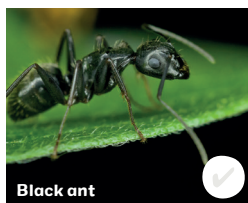
Pond skater

© Brad Smith @ flickr

### 6. Pond skater

**Main features:** Slim, leggy bugs with long antennae. Some have wings. Skates quickly over the water surface.

**Where to look:** In ponds and calm areas of water, look for indentations on the surface which seem to move.



Black ant

© Evan Kane @ flickr

### 12. Ant

**Main features:** Skinny insects with obvious three part bodies and antennae with 'elbows'. Usually wingless and always living in colonies.

**Where to look:** On the ground. Where there's one, there's always more! They nest underground, under stones or buildings.



Share your experiences  
**@wwtworldwide**

